

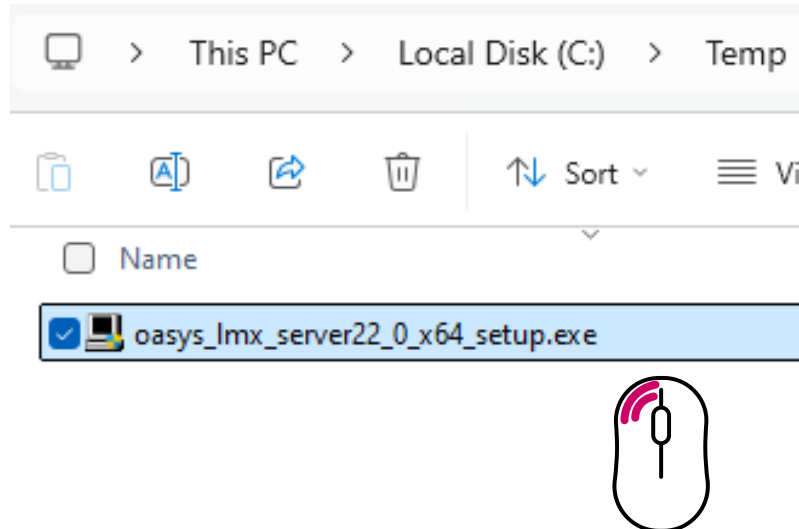
# Installation of license server of Oasys Suite Version 22 on a Windows machine

# How to use this document?

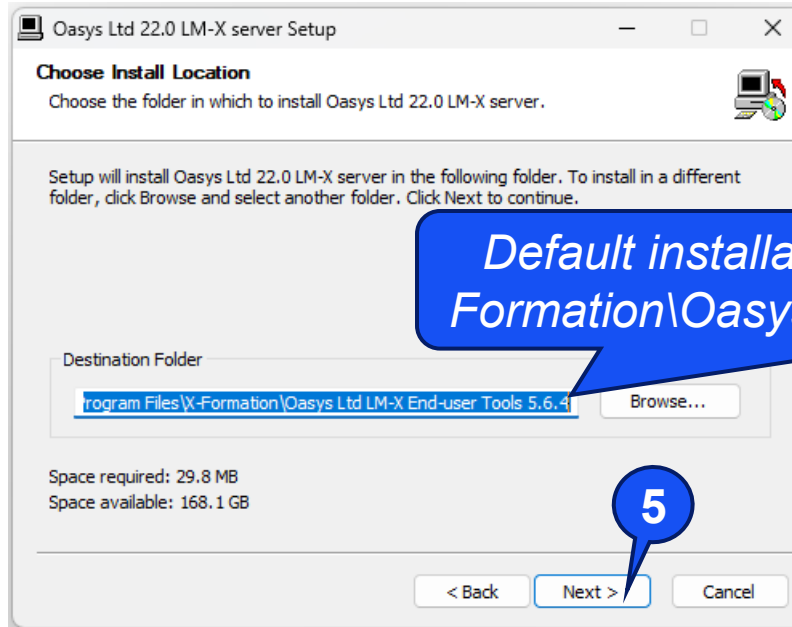
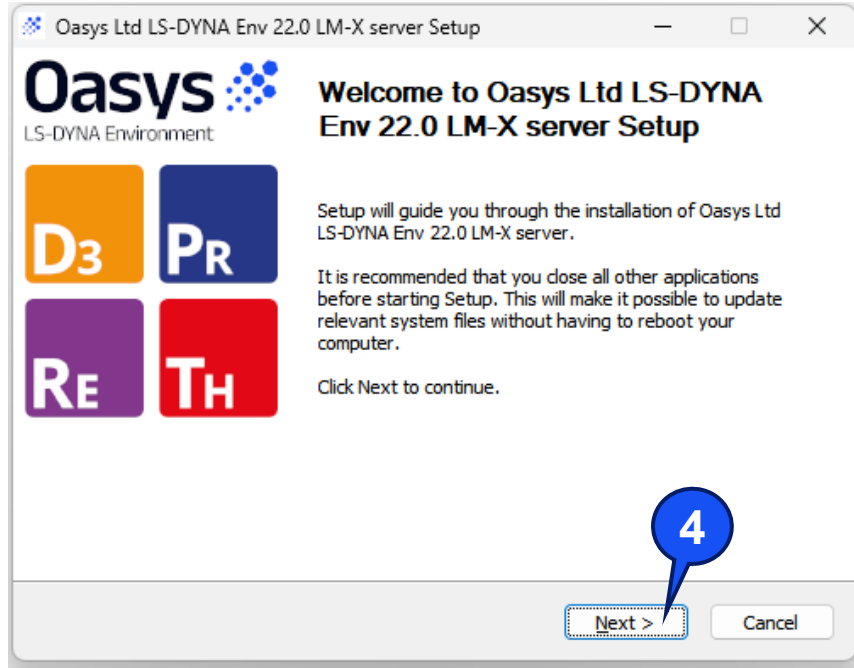
- If you are installing the LM-X license server for Oasys Suite products for the first time.
  - Obtain the details needed for license file generation – refer pages 3 thru 8 (*both inclusive*).
  - Start the LM-X license service – refer pages 13 thru 16 (*both inclusive*).
  - Fetching the license on a client machine – refer pages 18 thru 21 (*both inclusive*)
- If you are previously using LM-X license server (5.5.7) for Oasys Suite products and have the license file and now you wish to move to Oasys Suite Version 22 – refer pages 3 thru 5 (*both inclusive*) and pages 7 thru 16 (*both inclusive*).
- If you are already using the LM-X license server (5.6.4) for Oasys Suite products for V22 and have received a renewed/ updated license file – refer page 17.

# Installation procedure

1. Download the Oasys LM-X license server executable from [https://dyna-downloads.oasys-software.com/oasys\\_lm\\_server22\\_0\\_x64\\_setup.exe](https://dyna-downloads.oasys-software.com/oasys_lm_server22_0_x64_setup.exe)
2. After downloading the Oasys LM-X license server executable place it in any folder/directory of your choice (could be even C:\Temp\) on the hard disk of the machine which you wish to use as the license server.
3. To start the installation, select the executable (oasys\_lm\_server22\_0\_x64\_setup.exe ) and 'Double click' the left mouse button.

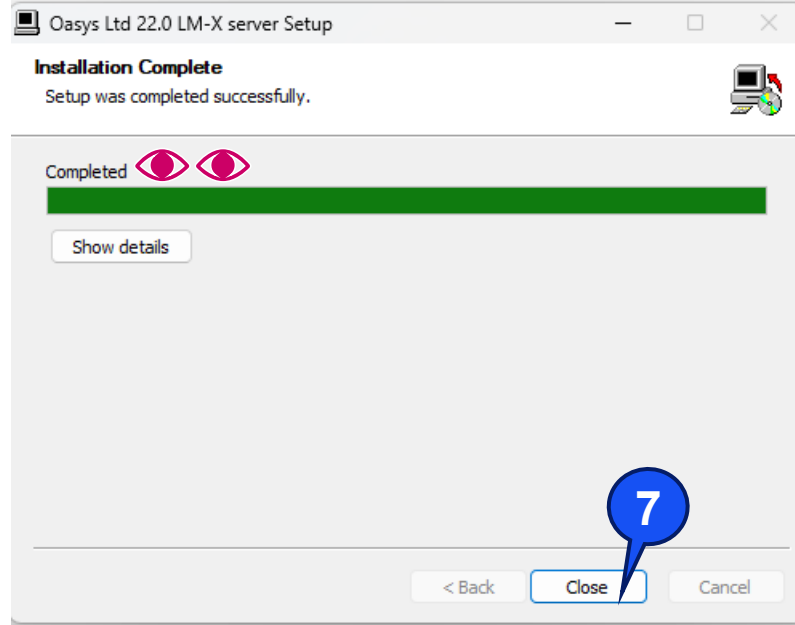
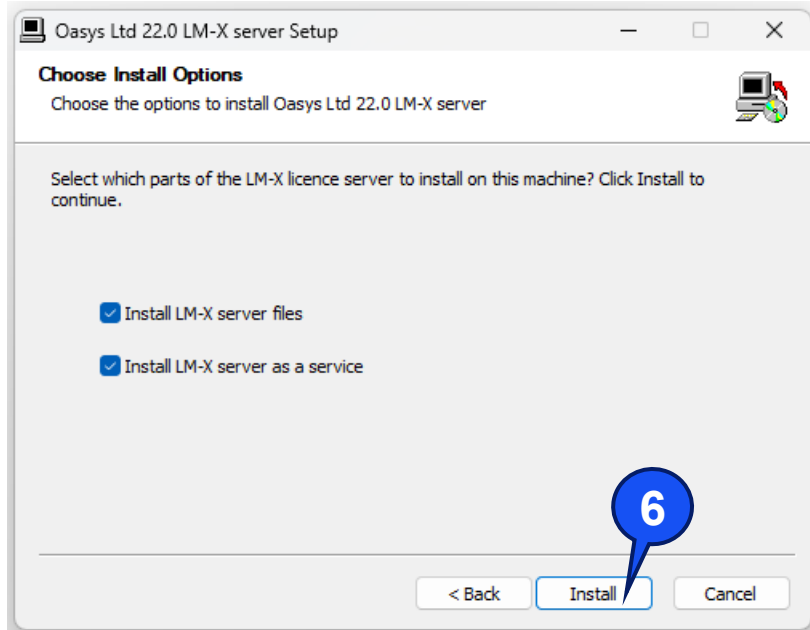


# Installation procedure...



*Default installation folder 'C:\Program Files\X-Formation\Oasys Ltd LM-X End-user Tools 5.6.4'*

# Installation procedure...

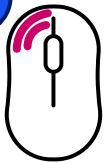


# Installation procedure...

Local Disk (C:) > Program Files > X-Formation > Oasys Ltd LM-X End-user Tools 5.6.4

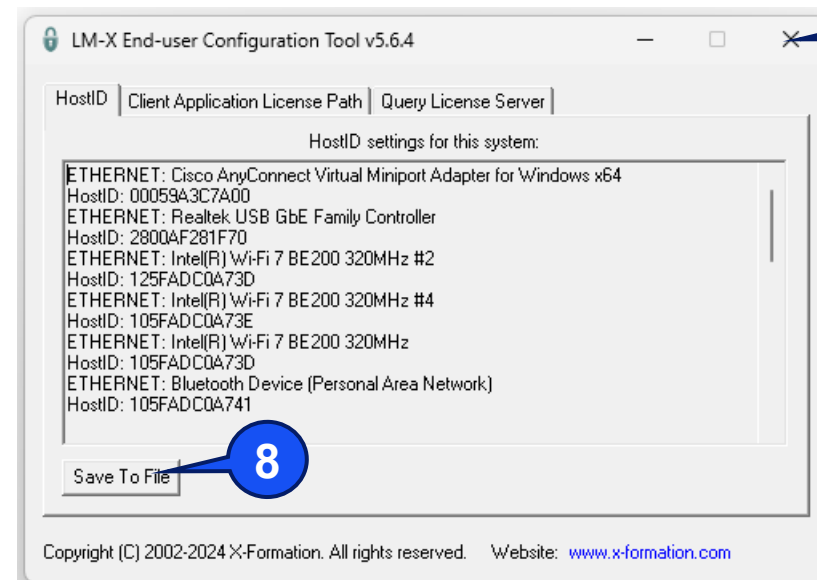
<input type="checkbox"/>	Name	Date modified	Type	Size
<input type="checkbox"/>	xficon.ico	17-10-2024 15:57	ICO File	5 KB
<input type="checkbox"/>	lmx-serv.log	26-07-2025 10:05	Text Document	0 KB
<input type="checkbox"/>	lmx-serv.exe	17-10-2024 16:01	Application	11,884 KB
<input type="checkbox"/>	lmx-serv.cfg	18-03-2025 20:12	CFG File	17 KB
<input type="checkbox"/>	lmxendutil.exe	17-10-2024 16:01	Application	10,774 KB
<input checked="" type="checkbox"/>	lmxconfigtool.exe	17-10-2024 16:01	Application	12,822 KB
<input type="checkbox"/>	LicserverClient.jar	17-10-2024 15:59	JAR File	9,459 KB
<input type="checkbox"/>	liblmxvendor.dll	11-02-2025 21:40	Application extension	464 KB

7



Using File Explorer get into 'C:\Program Files\X-Formation\Oasys Ltd LM-X End-user Tools 5.6.4'

**Skip this page, if you  
already have a license file**



Save the 'LmxHostid.txt' in location of your choice  
and share that file for license file generation

# Installation procedure...

Local Disk (C:) > Program Files > X-Formation > Oasys Ltd LM-X End-user Tools 5.6.4

<input type="checkbox"/> Name	Date modified	Type	Size
xficon.ico	17-10-2024 15:57	ICO File	5 KB
lmx-serv.log	26-07-2025 10:05	Text Document	0 KB
lmx-serv.exe	17-10-2024 16:01	Application	11,884 KB
lmx-serv.cfg	18-03-2025 20:12	CFG File	17 KB
lmxendutil.exe	17-10-2024 16:01	Application	10,774 KB
lmxconfigtool.exe	17-10-2024 16:01	Application	12,822 KB
LicserverClient.jar	17-10-2024 15:59	JAR File	9,459 KB
liblmxvendor.dll	11-02-2025 21:40	Application extension	464 KB
arup.lic	20-02-2025 12:18	LIC File	15 KB

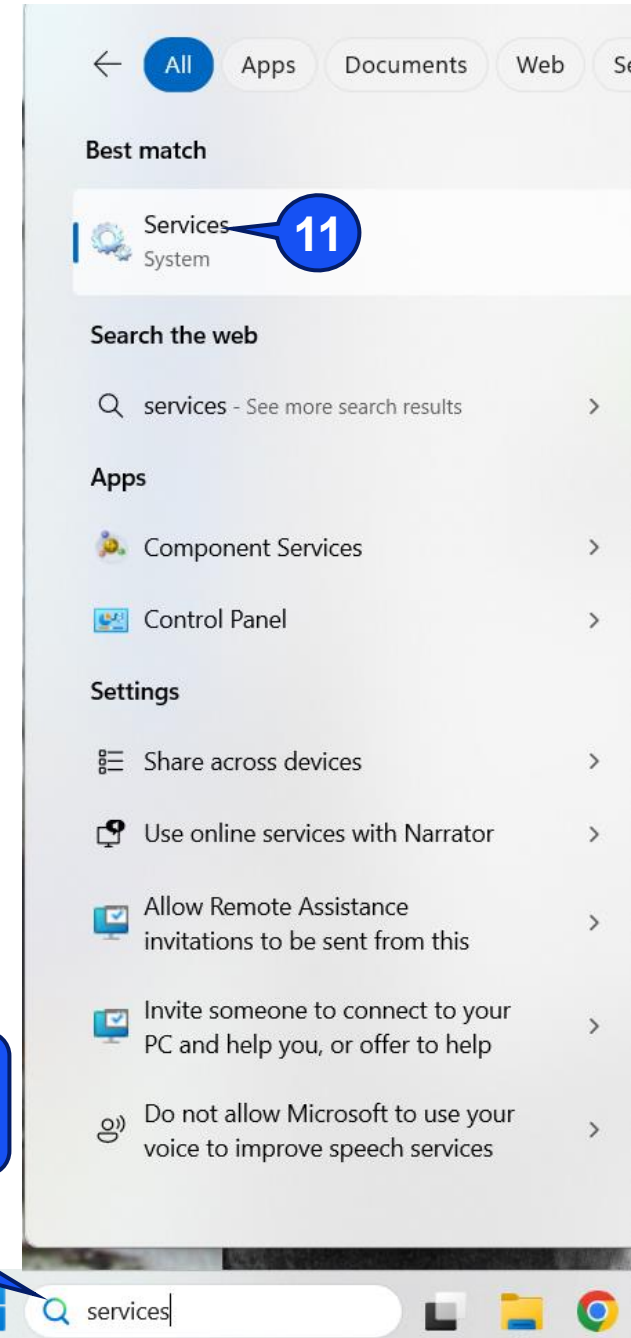
10

*Rename the license file that you have received to 'arup.lic' and place it under 'C:\Program Files\X-Formation\Oasys Ltd LM-X End-user Tools 5.6.4' folder*

***In case you wish to configure the license server with a non-default port, i.e., a port other than 6200, then refer pages 22 & 23.***

# Installation procedure...

*Using the search option next to the 'Windows Start' on the task bar, open 'Services'*





# Installation procedure...

Services

File Action View Help

← → [Icons]

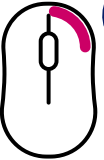
**Locate the service 'Oasys Ltd LM-X License Server 5.5.7'**

Services (Local)

**Oasys Ltd LM-X License Server 5.5.7**

[Stop](#) the service  
[Restart](#) the service

Description:  
LM-X license server 5.5.7

 **A**

Name	Description	Status	Startup Type	Log On As
Oasys Ltd LM-X License Server 5.5.7	LM-X license server 5.5.7	Running	Automatic	Local System
Oasys Ltd LM-X License Server 5.6.4	LM-X license server 5.6.4		Automatic	Local System
Offline Files	The Offline Files service p...		Manual (Trigger Start)	Local System
OneDrive Updater Service	Keeps your OneDrive up t...		Manual (Trigger Start)	Local System
OpenSSH Authentication Agent	Agent to hold private key...		Disabled	Local System
Optimize drives	Helps the computer run ...		Manual	Local System
P9RdrService_90ed41	Enables trigger-starting p...		Manual (Trigger Start)	Local System
PaperCut Direct Print Monitor	PaperCut service that mo...	Running	Automatic	Local System
PaperCut Print Deploy Client	Automatically deploys pri...	Running	Automatic	Local System
Parental Controls	Enforces parental control...		Manual	Local System
Payments and NFC/SE Manager	Manages payments and ...		Manual (Trigger Start)	Local Service
Peer Name Resolution Protocol	Enables serverless peer na...		Manual	Local Service
Peer Networking Grouping	Enables multi-party com...		Manual	Local Service
Peer Networking Identity Manager	Provides identity services ...		Manual	Local Service

**Skip this page if you do not have 'Oasys Ltd LM-X License Server 5.5.7' installed and running on the machine.**

# Installation procedure...

Services

File Action View Help

Services (Local)

**Oasys Ltd LM-X License Server 5.5.7**

Stop the service  
Restart the service

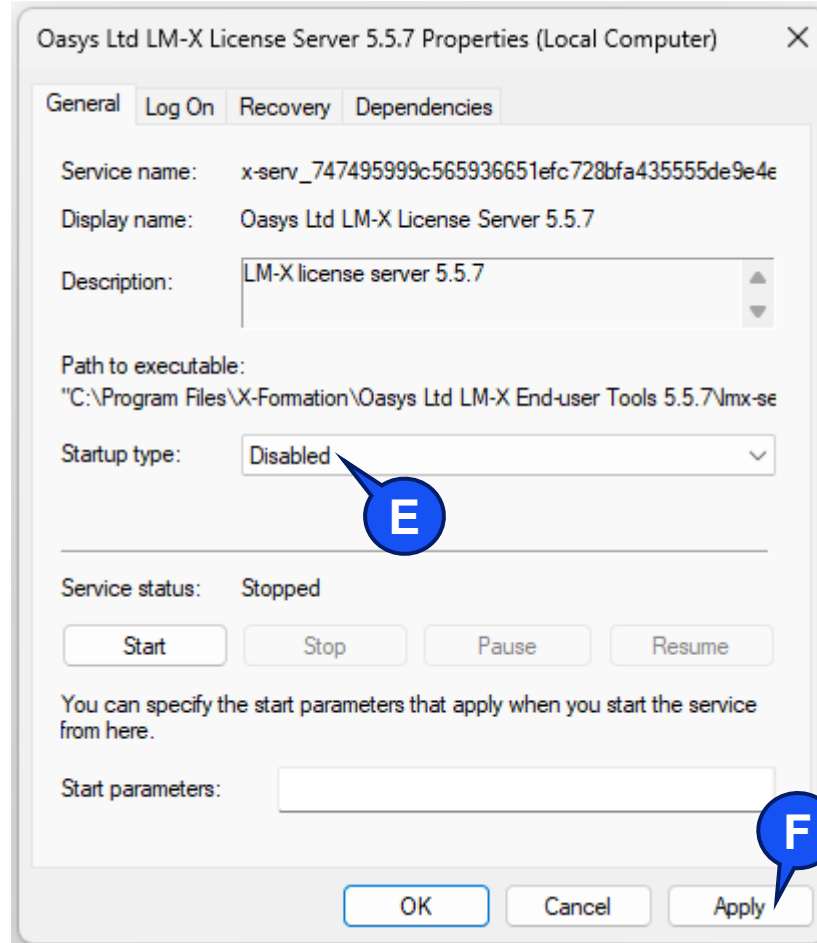
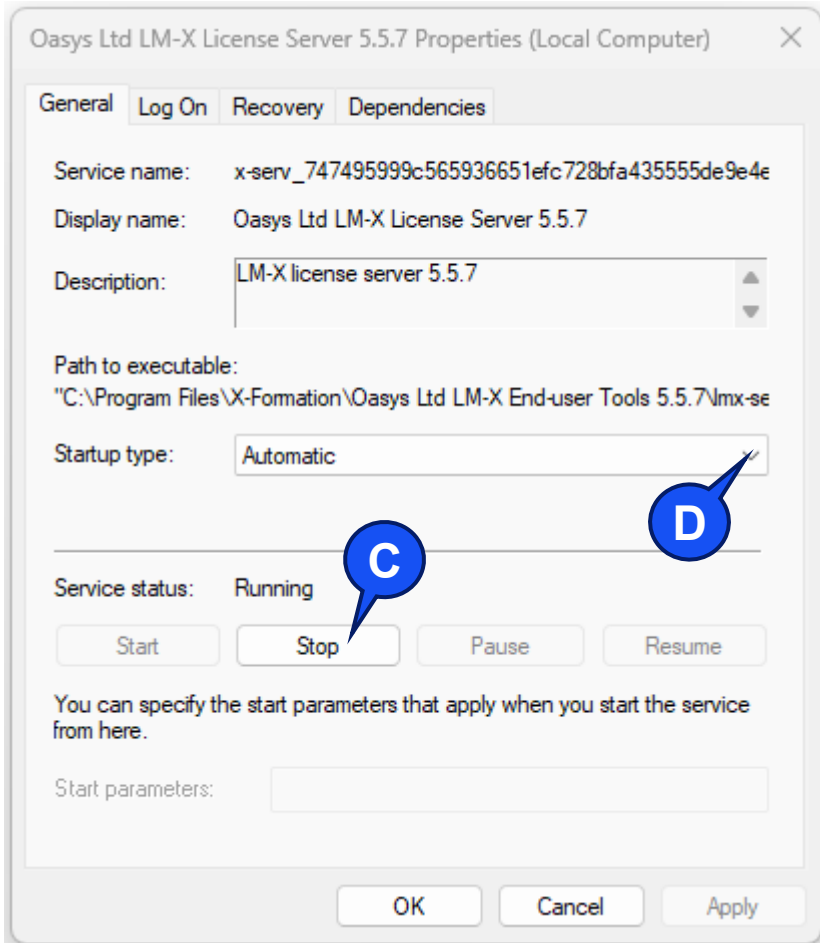
Description:  
LM-X license server 5.5.7

Name	Description	Status	Startup Type	Log On As
Oasys Ltd LM-X License Server 5.5.7	LM-X License Server 5.5.7	Running	Automatic	Local System
Oasys Ltd LM-X License Server 5.6.4	LM-X License Server 5.6.4		Automatic	Local System
Offline Files			Manual (Trigger Start)	Local System
OneDrive Updater Service			Manual (Trigger Start)	Local System
OpenSSH Authentication Agent			Disabled	Local System
Optimize drives			Manual	Local System
P9RdrService_90ed41			Manual (Trigger Start)	Local System
PaperCut Direct Print Monitor		Running	Automatic	Local System
PaperCut Print Deploy Client		Running	Automatic	Local System
Parental Controls			Manual	Local System
Payments and NFC/SE Manager			Manual (Trigger Start)	Local Service
Peer Name Resolution Protocol			Manual	Local Service
Peer Networking Grouping			Manual	Local Service
Peer Networking Identity Manager	Provides identity services ...		Manual	Local Service

**B**

**Skip this page if you do not have 'Oasys Ltd LM-X License Server 5.5.7' installed and running on the machine.**

# Installation procedure...



***Skip this page if you do not have 'Oasys Ltd LM-X License Server 5.5.7' installed and running on the machine.***

# Installation procedure...

Services

File Action View Help

Services (Local)

**Oasys Ltd LM-X License Server 5.5.7**

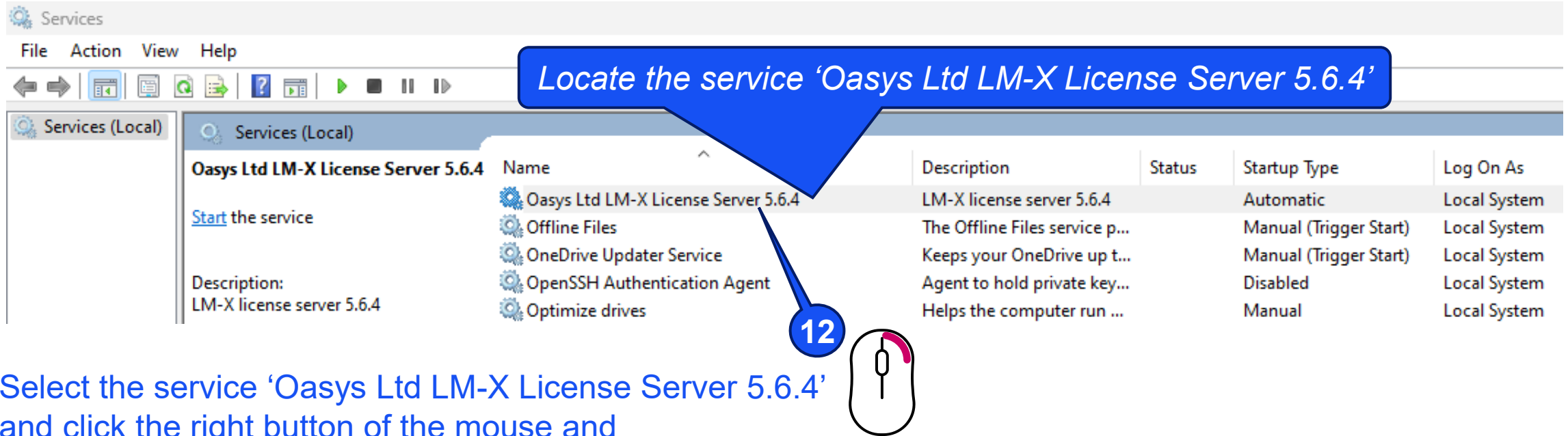
Description:  
LM-X license server 5.5.7

Name	Description	Status	Startup Type	Log On As
Oasys Ltd LM-X License Server 5.5.7	LM-X license server 5.5.7		Disabled	Local System
Oasys Ltd LM-X License Server 5.6.4	LM-X license server 5.6.4		Automatic	Local System
Offline Files	The Offline Files service p...		Manual (Trigger Start)	Local System
OneDrive Updater Service	Keeps your OneDrive up t...		Manual (Trigger Start)	Local System
OpenSSH Authentication Agent	Agent to hold private key...		Disabled	Local System
Optimize drives	Helps the computer run ...		Manual	Local System
P9RdrService_90ed41	Enables trigger-starting p...		Manual (Trigger Start)	Local System
PaperCut Direct Print Monitor	PaperCut service that mo...	Running	Automatic	Local System
PaperCut Print Deploy Client	Automatically deploys pri...	Running	Automatic	Local System
Parental Controls	Enforces parental control...		Manual	Local System
Payments and NFC/SE Manager	Manages payments and ...		Manual (Trigger Start)	Local Service
Peer Name Resolution Protocol	Enables serverless peer na...		Manual	Local Service
Peer Networking Grouping	Enables multi-party com...		Manual	Local Service
Peer Networking Identity Manager	Provides identity services ...		Manual	Local Service

Confirm that the 'Status' of 'Oasys Ltd LM-X License Server 5.5.7' is not listed as 'Running' and the 'Startup Type' is listed as 'Disabled'

**Skip this page if you do not have 'Oasys Ltd LM-X License Server 5.5.7' installed and running on the machine.**

# Installation procedure...



Locate the service 'Oasys Ltd LM-X License Server 5.6.4'

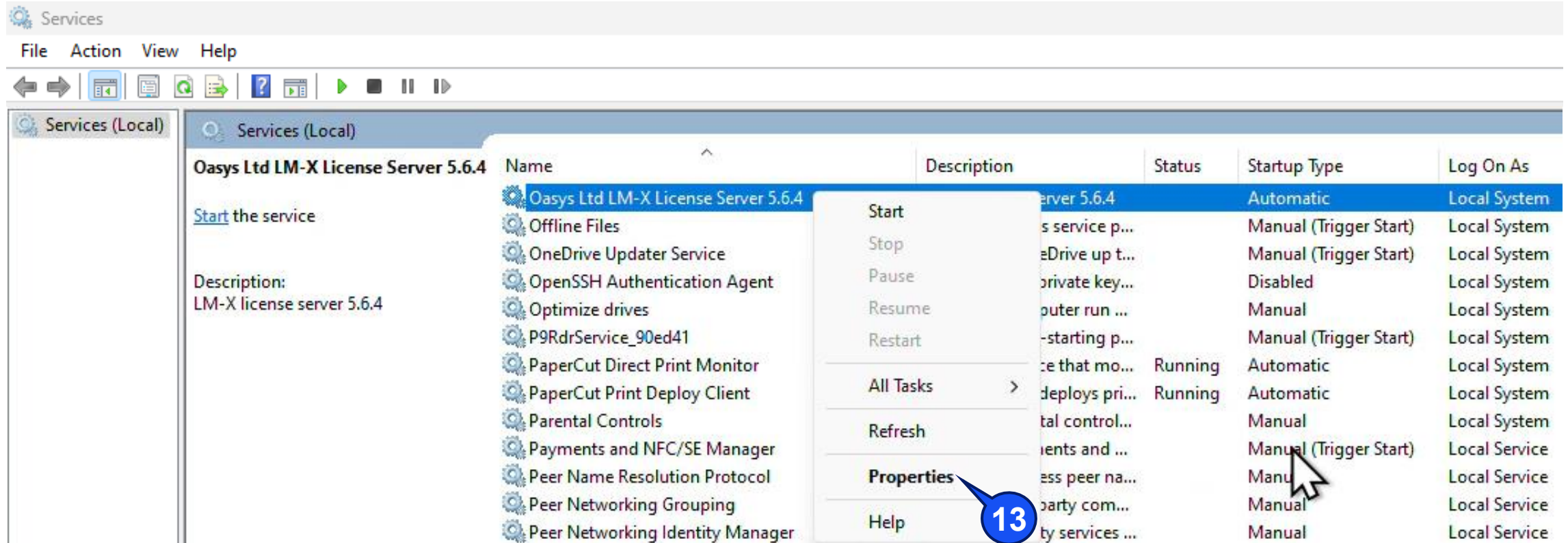
Name	Description	Status	Startup Type	Log On As
Oasys Ltd LM-X License Server 5.6.4	LM-X license server 5.6.4		Automatic	Local System
Offline Files	The Offline Files service p...		Manual (Trigger Start)	Local System
OneDrive Updater Service	Keeps your OneDrive up t...		Manual (Trigger Start)	Local System
OpenSSH Authentication Agent	Agent to hold private key...		Disabled	Local System
Optimize drives	Helps the computer run ...		Manual	Local System

12

Select the service 'Oasys Ltd LM-X License Server 5.6.4' and click the right button of the mouse and



# Installation procedure...



# Installation procedure...

Oasys Ltd LM-X License Server 5.6.4 Properties (Local Computer)

General Log On Recovery Dependencies

Service name: lx-serv\_172319b3e95df2bf5e8e4004fa3c27646da50db6

Display name: Oasys Ltd LM-X License Server 5.6.4

Description: LM-X license server 5.6.4

Path to executable:  
"C:\Program Files\X-Formation\Oasys Ltd LM-X End-user Tools 5.6.4\lms-se

Startup type: Automatic

Service status: Stopped

Start Stop Pause Resume

You can specify the start parameters that apply when you start the service from here.

Start parameters:

OK Cancel Apply

14

Oasys Ltd LM-X License Server 5.6.4 Properties (Local Computer)

General Log On Recovery Dependencies

Service name: lx-serv\_172319b3e95df2bf5e8e4004fa3c27646da50db6

Display name: Oasys Ltd LM-X License Server 5.6.4

Description: LM-X license server 5.6.4

Path to executable:  
"C:\Program Files\X-Formation\Oasys Ltd LM-X End-user Tools 5.6.4\lms-se

Startup type: Automatic (Delayed Start)

Service status: Stopped

Start Stop Pause Resume

You can specify the start parameters that apply when you start the service from here.

Start parameters:

OK Cancel Apply

15

16

Oasys Ltd LM-X License Server 5.6.4 Properties (Local Computer)

General Log On Recovery Dependencies

Service name: lx-serv\_172319b3e95df2bf5e8e4004fa3c27646da50db6

Display name: Oasys Ltd LM-X License Server 5.6.4

Description: LM-X license server 5.6.4

Path to executable:  
"C:\Program Files\X-Formation\Oasys Ltd LM-X End-user Tools 5.6.4\lms-se

Startup type: Automatic (Delayed Start)

Service status: Stopped

Start Stop Pause Resume

You can specify the start parameters that apply when you start the service from here.

Start parameters:

OK Cancel Apply

17

18

# Installation procedure...

**Services**

File Action View Help

Services (Local)

**Oasys Ltd LM-X License Server 5.6.4**

[Stop the service](#)  
[Restart the service](#)

Description:  
LM-X license server 5.6.4

Name	Description	Status	Startup Type	Log On As
Oasys Ltd LM-X License Server 5.6.4	LM-X license server 5.6.4	Running	Automatic (Delayed Start)	Local System
Offline Files	The Offline Files service p...		Manual (Trigger Start)	Local System
OneDrive Updater Service	Keeps your OneDrive up t...		Manual (Trigger Start)	Local System
OpenSSH Authentication Agent	Agent to hold private key...	Disabled		Local System
Optimize drives	Helps the computer run ...	Manual		Local System
P9RdrService_90ed41	Enables trigger-starting p...		Manual (Triqger Start)	Local System

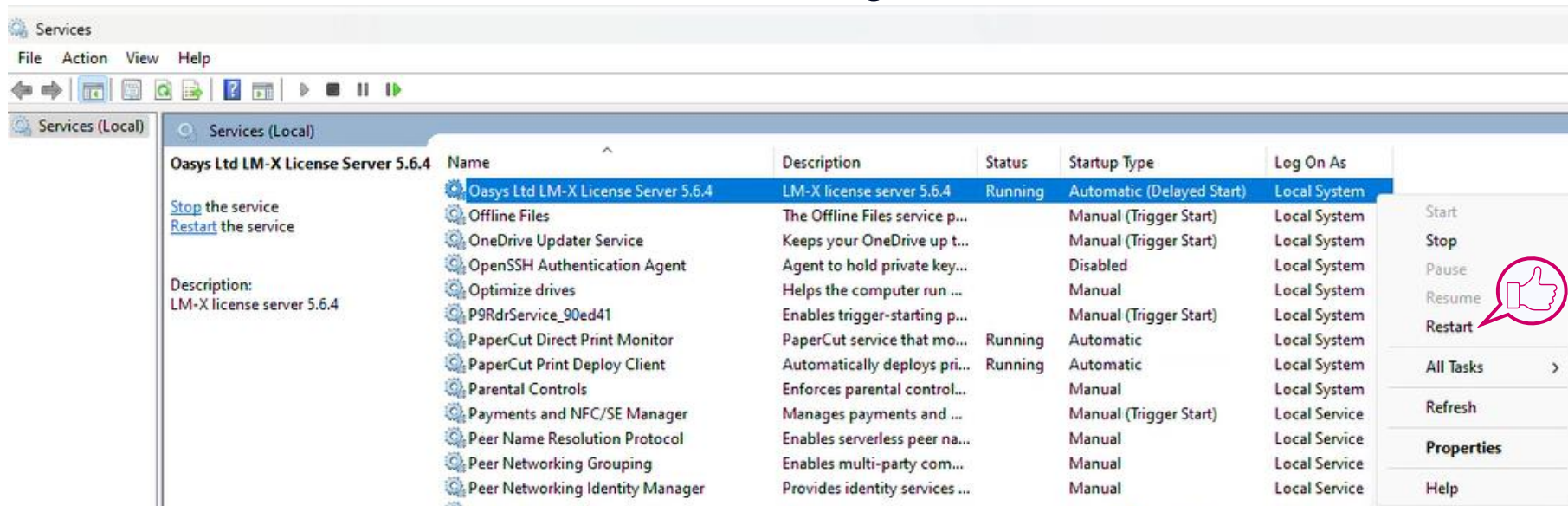
*'Oasys Ltd LM-X License Server 5.6.4' service status 'Running'*

***If the 'Oasys Ltd LM-X License Server 5.6.4' service status is 'Running', then it confirms that the License server is installed correctly and working as expected.***



# Installation procedure...

- Delete the 'arup.lic' file from 'C:\Program Files\X-Formation\Oasys Ltd LM-X End-user Tools 5.6.4\'
- Copy the new license file to 'C:\Program Files\X-Formation\Oasys Ltd LM-X End-user Tools 5.6.4\'
- Rename the new license file as 'arup.lic'.
- Using the 'Search' option next to Windows 'Start' option, open the 'Services'.
- Locate the service 'Oasys Ltd LM-X License Server 5.6.4' and click the right button of the mouse and choose 'Restart' to restart the service using the renewed license file.



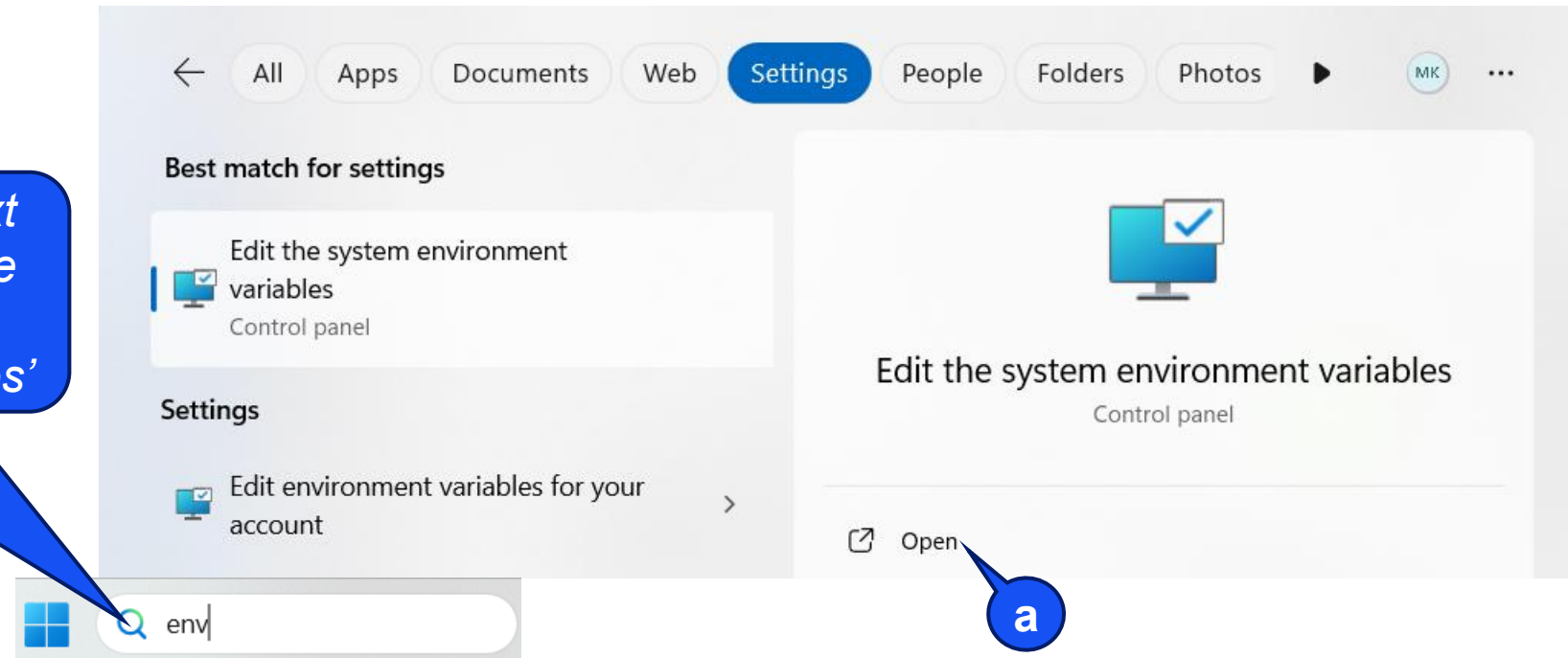
**Whenever, you receive a renewed license file, then follow the instructions on this page.**

# Configuring the client machine\* to fetch Oasys Suite products license

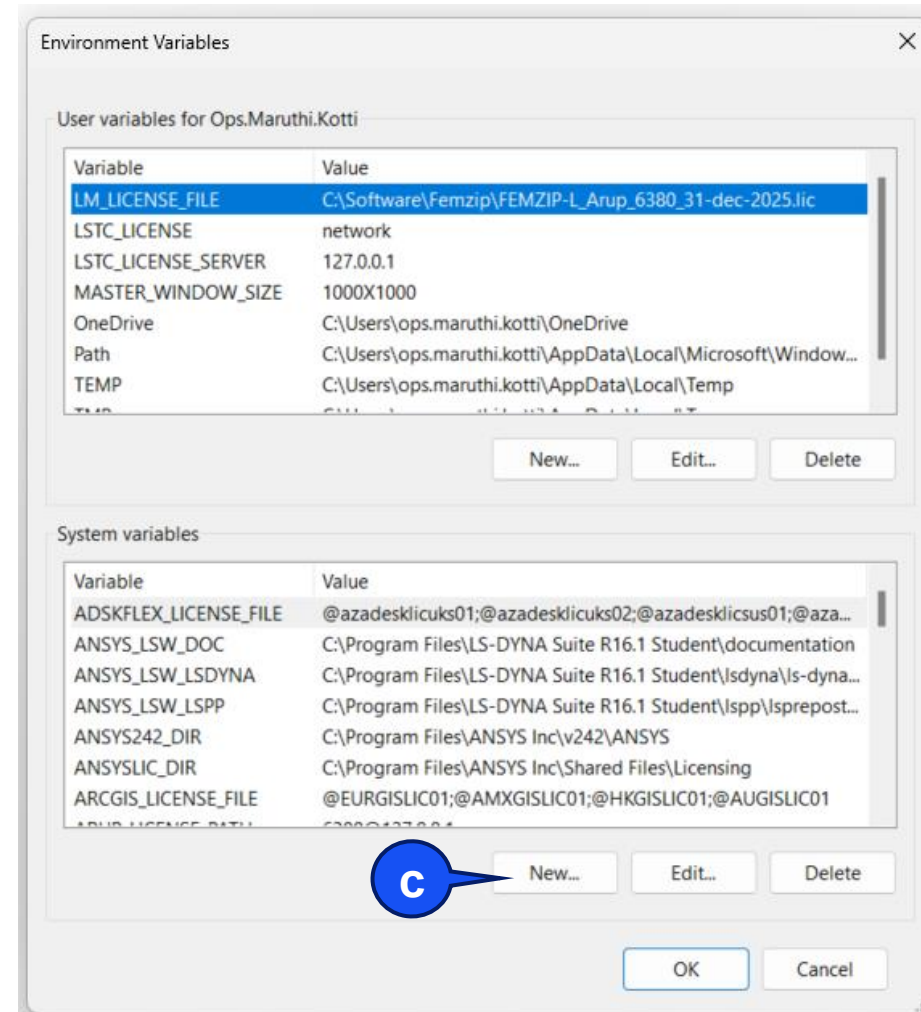
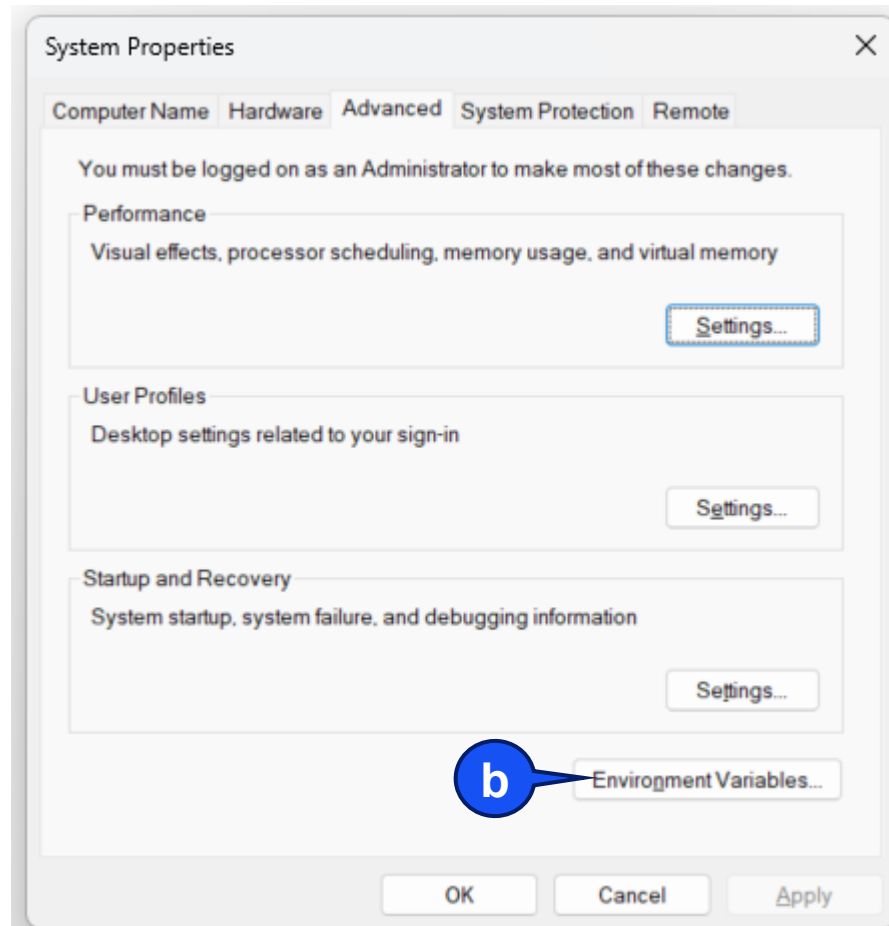
*\* Please note that the client machine (it could be even the same which is acting as the license server machine) in this context is the machine on which the users are going to use Oasys Suite products (Primer/ D3PLOT/ T-His/ Reporter).*

# Fetching license on a client machine

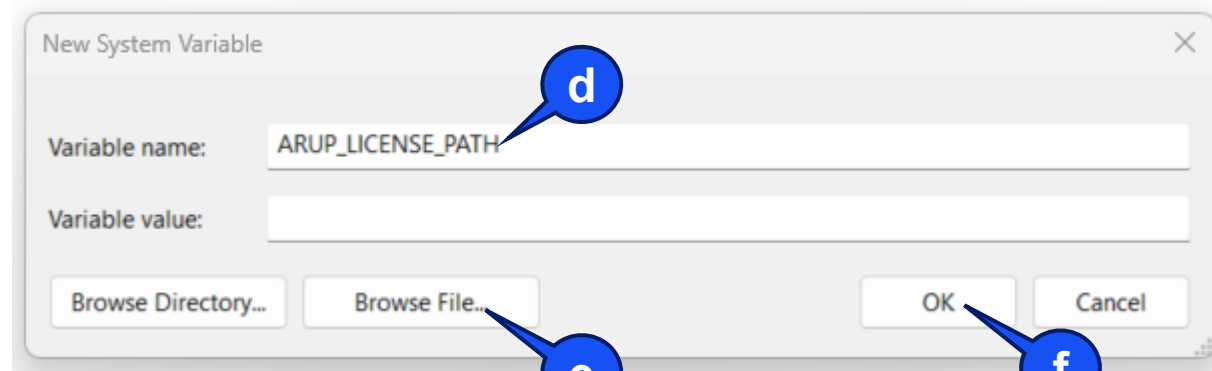
*Using the search option next to the 'Windows Start' on the task bar, access 'Edit the system environment variables'*



# Fetching license on a client machine...

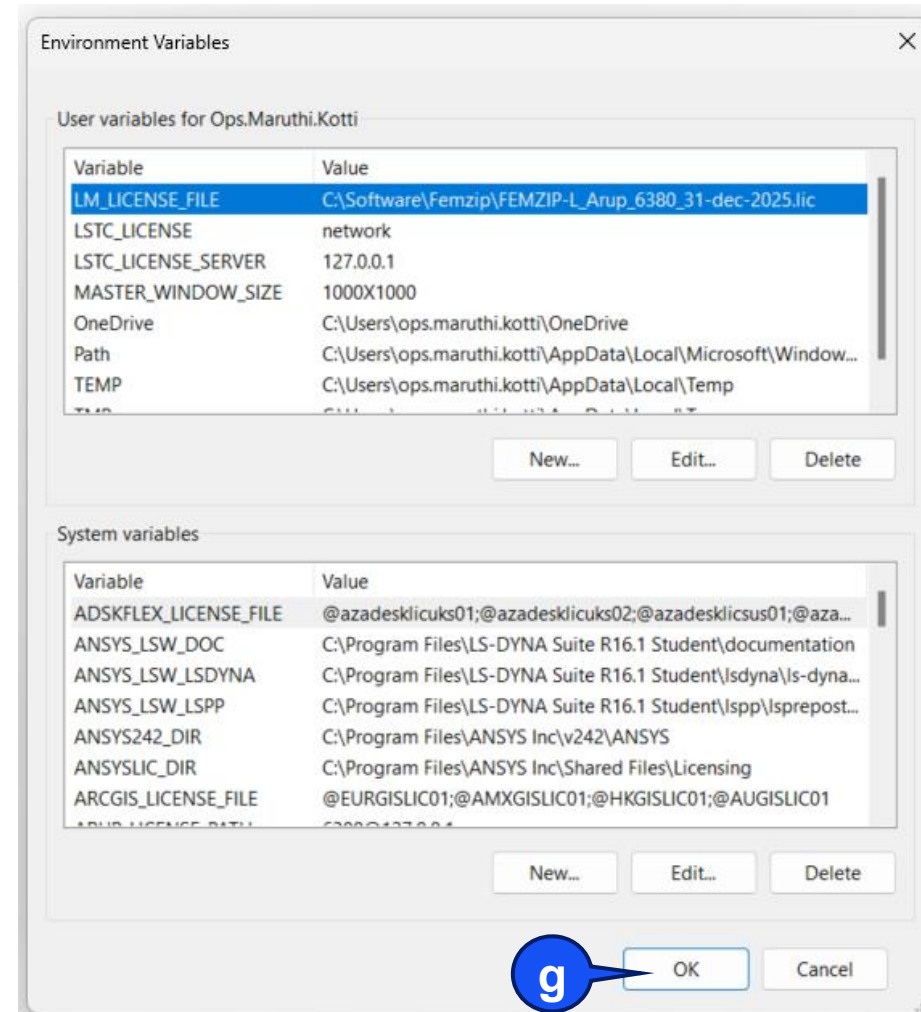
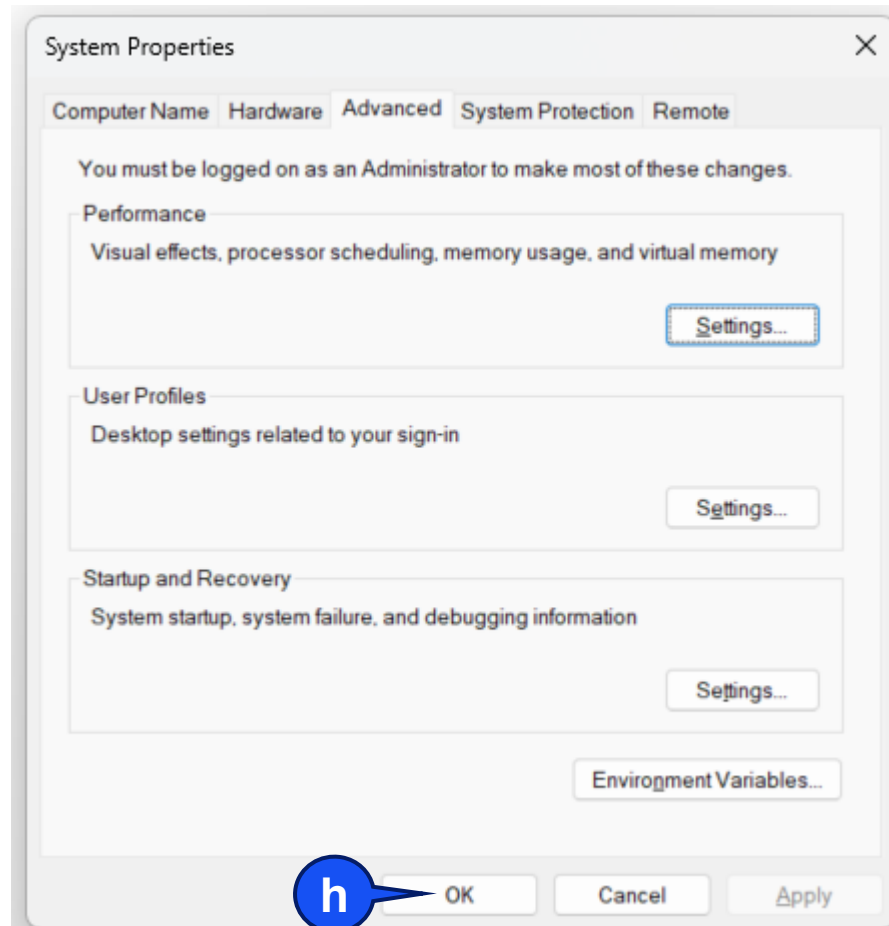


# Fetching license on a client machine...



*Using 'Browse File' select the Oasys Suite license file which is placed on the hard disk or the machine.*

# Fetching license on a client machine...



# Starting the license server on a non-default port\*



# Configuring a non-default port

Local Disk (C:) > Program Files > X-Formation > Oasys Ltd LM-X End-user Tools 5.6.4

Name	Date modified	Type	Size
xficon.ico	17-10-2024 15:57	ICO File	5 KB
lmx-serv.log	26-07-2025 10:05	Text Document	0 KB
lmx-serv.exe	17-10-2024 16:01	Application	11,884 KB
lmx-serv.cfg	18-03-2025 20:12	CFG File	17 KB
lmxendutil.exe	17-10-2024 16:01	Application	10,774 KB
lmxconfigtool.exe	17-10-2024 16:01	Application	12,822 KB
LicserverClient.jar	17-10-2024 15:59	JAR File	9,459 KB
liblmxvendor.dll	11-02-2025 21:40	Application extension	464 KB

I

Open 'lmx-serv.cfg' file in any text editor like, notepad, notepad++, textpad, wordpad, etc.

26  
27  
28

```
*****  
TCP_LISTEN_PORT = 6200
```

II

On line 27, change 6200 to any port number of your choice and save the 'lmx-serv.cfg' file. In case you are not sure which port number to be used, then use either 6300 or 6201.



# Contact us

## Global / UK

T: +44 121 213 3399  
E: [dyna.support@arup.com](mailto:dyna.support@arup.com)

## India

T: +91 40 69019723 / 98  
E: [india.support@arup.com](mailto:india.support@arup.com)

## China

T: +86 21 3118 8875  
E: [china.support@arup.com](mailto:china.support@arup.com)

## USA

T: +1 415 940 0959  
E: [us.support@arup.com](mailto:us.support@arup.com)

Subscribe to  
our newsletter:



Follow us on:



@Oasys LS-DYNA  
Environment



@Oasys LS-DYNA  
Environment



@Oasys



@Oasys

[www.oasys-software.com/dyna/](http://www.oasys-software.com/dyna/)